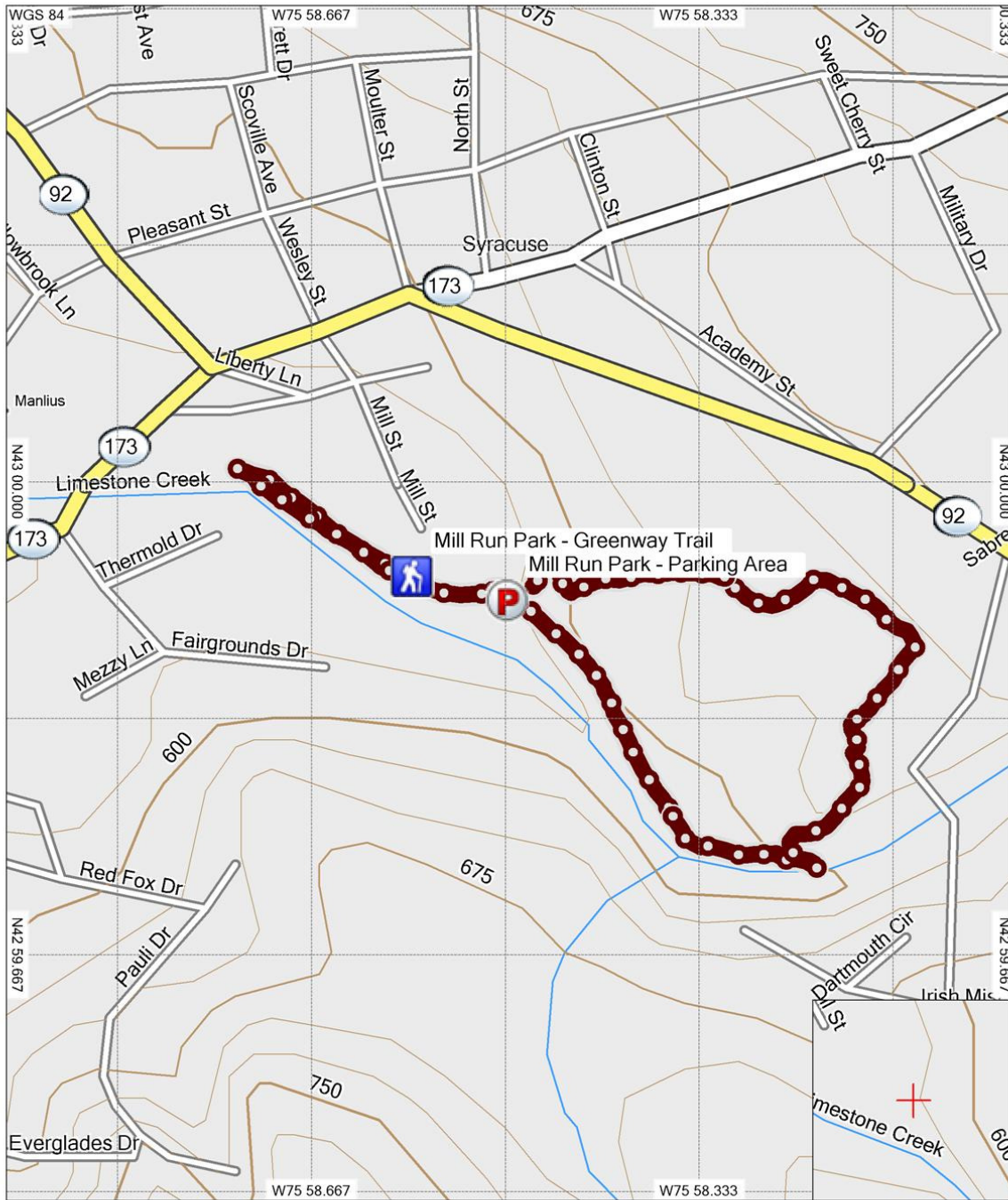
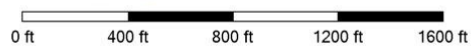


Mill Run Park - Trail Summary

Saturday, September 12, 2009
1:55 AM



TOPO U.S. 100K
© Garmin Ltd. or its Subsidiaries 1995-2009



MN TN
-12.6°

My Collection

GARMIN

1/1/2010

Elevation Profile



Index	Elevation	Leg Length	Leg Course	Position
1	565 ft			N42 59.934 W75 58.584
2	598 ft	22 ft	58° true	N42 59.936 W75 58.580
3	589 ft	38 ft	245° true	N42 59.933 W75 58.588
4	582 ft	4 ft	286° true	N42 59.933 W75 58.589
5	568 ft	19 ft	286° true	N42 59.934 W75 58.593
6	567 ft	25 ft	310° true	N42 59.937 W75 58.597
7	567 ft	46 ft	320° true	N42 59.943 W75 58.604
8	565 ft	26 ft	309° true	N42 59.945 W75 58.608
9	562 ft	59 ft	301° true	N42 59.950 W75 58.620
10	560 ft	23 ft	297° true	N42 59.952 W75 58.624
11	570 ft	50 ft	310° true	N42 59.957 W75 58.633