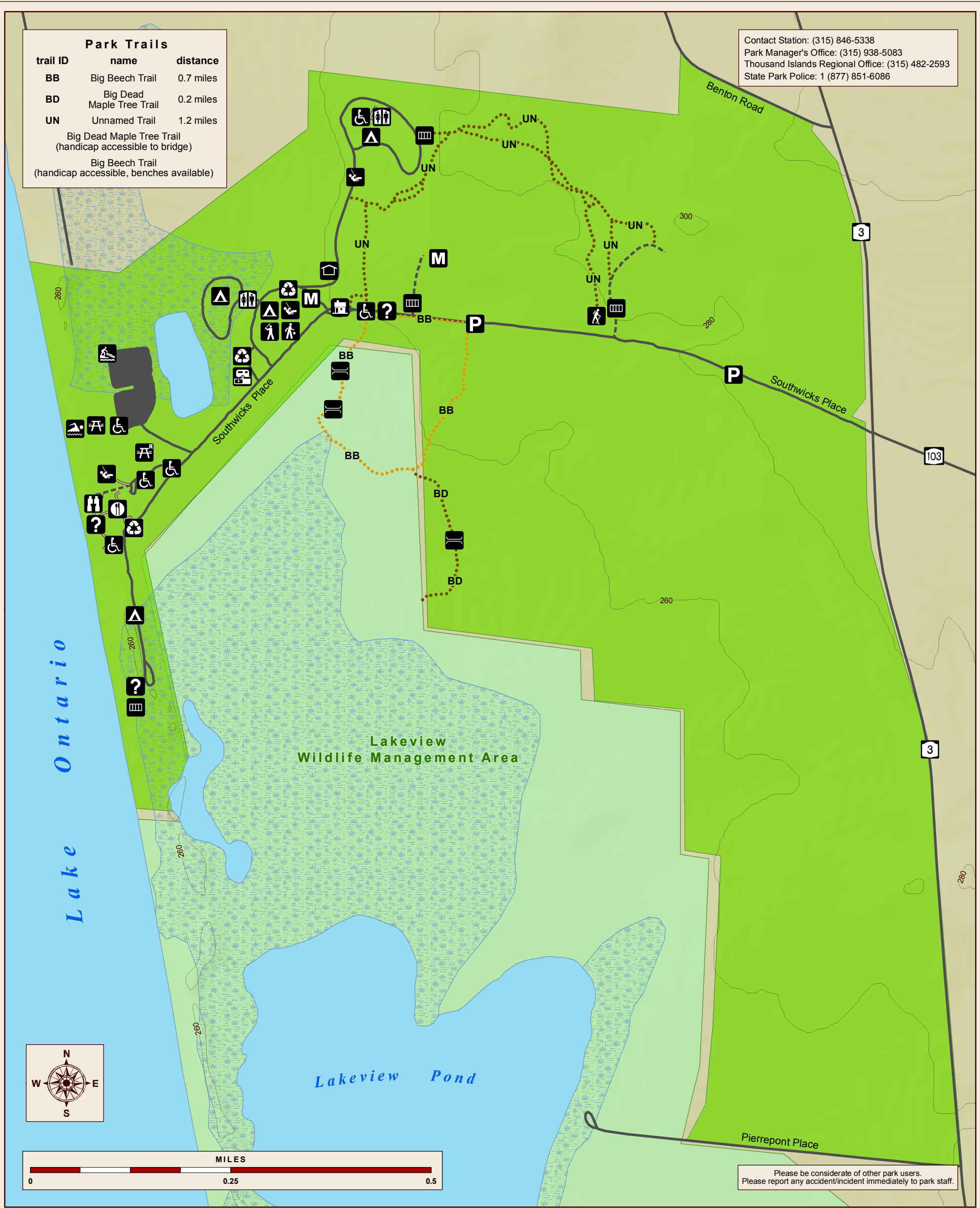


Park Trails		
trail ID	name	distance
BB	Big Beech Trail	0.7 miles
BD	Big Dead Maple Tree Trail	0.2 miles
UN	Unnamed Trail	1.2 miles
	Big Dead Maple Tree Trail (handicap accessible to bridge)	
	Big Beech Trail (handicap accessible, benches available)	

Contact Station: (315) 846-5338
 Park Manager's Office: (315) 938-5083
 Thousand Islands Regional Office: (315) 482-2593
 State Park Police: 1 (877) 851-6086



Please be considerate of other park users.
 Please report any accident/incident immediately to park staff.



David A. Paterson, Governor
 Carol Ash, Commissioner

TRAIL MAP

Switzwick Beach State Park

Map produced by NYSOPRHP GIS Unit, December 1, 2009.

Legend

- | | | |
|-----------------|------------------------|---------------------|
| state park land | parking | playground |
| DEC land | restroom | baseball |
| parking lot | concessions | beach |
| water | handicap accessible | car top boat launch |
| wetlands | kiosk | recycling container |
| roads | viewing scope | recreation building |
| unpaved road | reservable picnic area | bridge |
| sidewalk | picnic site | gate |
| 20' contours | campground | dumping station |
| unmarked trail | water spigot | maintenance |
| trailhead | | |